

2775 Series

THOMAS
by Gardner Denver

FEATURES

- > Monolithic head
- > Epoxy coated wetted parts
- > 17mm shaft & bearing compliment
- > Oil-less operation
- > Permanently lubricated bearings
- > Stainless steel valves
- > Die-cast aluminum components
- > Proven WOB-L® technology
- > Field serviceable
- > Thermally protected motor
- > Designed and tested per Agency standards
- > RoHS/REACH compliant
- > Agency Listed

Declaration documentation available upon request

TYPICAL APPLICATIONS

- > Dental Equipment
- > Pharmaceutical Processing Equipment
- > Disinfectant Sprayers
- > Pond Aeration
- > Dry Sprinkler Systems
- > Laboratory Compressed Air

BASE MODELS

2775CE50

(115/60/1)

2775CE70

(115/60/1)

2775CE75

(115/60/1)

2775CGHI50

(230/601/1 & 220-240/50/1)

2775CGUU70

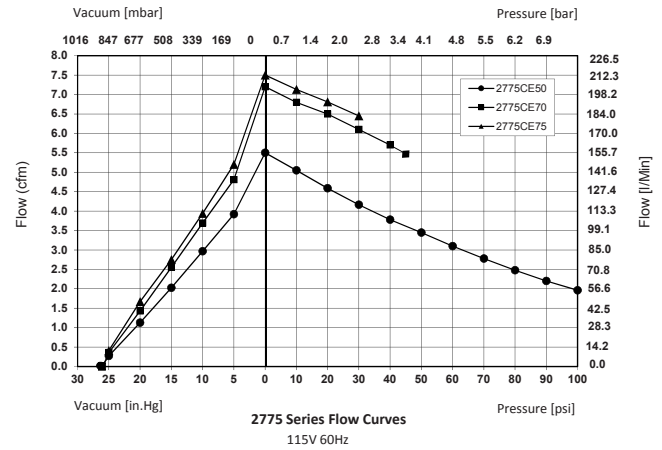
(230/50/601/1)



WOB-L®

2775 Series

Flow	7.5 cfm (212.4 l/min)
Max. pressure	Up to 100 psi (6.9 bar)
Max. vacuum	Up to 91% local barometer



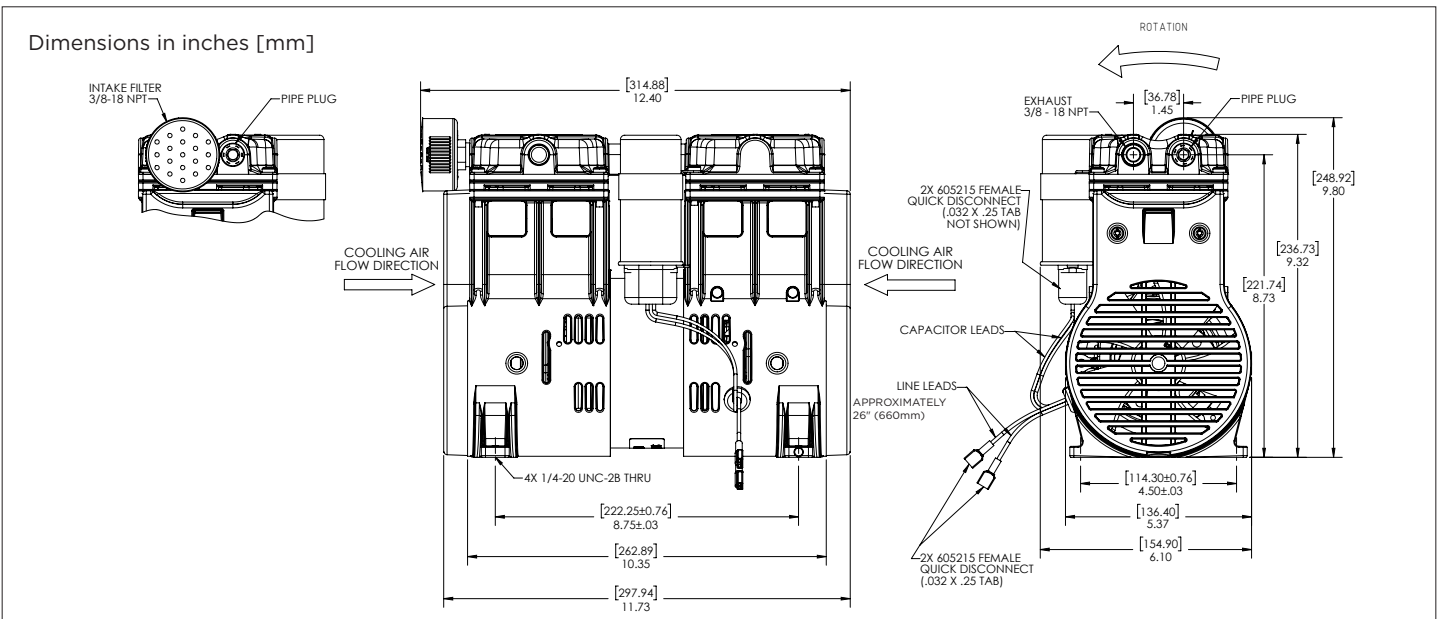
NOTE: All test values are nominal and for reference only. They are not guaranteed maximum or minimum limits, nor do they imply mean or median.

PERFORMANCE DATA	T17-0295	T19-0343	T17-0299
Model Number	2775CE50	2775CE70	2775CE75
Head Configuration	Pressure/vacuum parallel flow	Pressure/vacuum parallel flow	Pressure/vacuum parallel flow
Stroke	0.50 in. (12.7 mm)	0.70 in. (17.8 mm)	0.75 in. (19.0 mm)
Nominal voltage input	115/60/1	115/60/1	115/60/1
Max. open air flow	5.5 cfm (155.7 l/min)	7.2 cfm (203.9 l/min)	7.5 cfm (212.4 l/min)
Max. rated pressure	100 psi (6.9 bar)	45 psi (3.4 bar)	30 psi (2.1 bar)
Current at rated pressure	6.3A	9.24A	8.07A
Power at rated pressure	660W	1030W	895W
Speed at rated pressure	1735 rpm	1668 rpm	1688 rpm
Max. pressure restart	N/A	N/A	N/A
Max. vacuum	90% local barometer	91% local barometer	91% local barometer
Max. vacuum restart	N/A	N/A	N/A

ELECTRICAL DATA			
Motor type (Capacitance)	P.S.C. [35 µF]	P.S.C. [35 µF]	P.S.C. [35 µF]
Motor locked rotor current	30.0A	30.0A	30.0A
Motor insulation class	B	B	B
Thermal switch (Open temperature)	Yes [275°F (135°C)]	Yes [275°F (135°C)]	Yes [275°F (135°C)]
Lead wire color, gauge	Brown(hot), blue(neutral), 18 AWG	Brown(hot), blue(neutral), 18 AWG	Brown(hot), blue(neutral), 18 AWG
Capacitor lead wire color, gauge	Black, black, 18 AWG	Black, black, 18 AWG	Black, black, 18 AWG

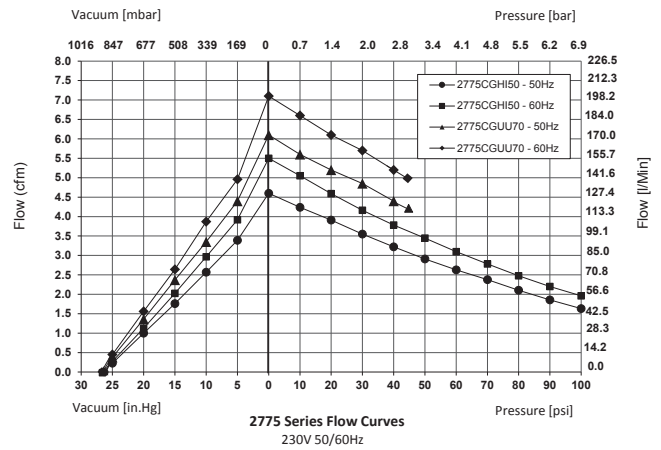
GENERAL DATA			
Operating ambient temperature	50° to 104°F (10°C TO 40°C)	50° to 104°F (10°C TO 40°C)	50° to 104°F (10°C TO 40°C)
Safety Certification	UR	UR	UR
Net weight	24.1 lbs (10.9 kg)	24.1 lbs (10.9 kg)	24.1 lbs (10.9 kg)

PRODUCT DIMENSIONS



2775 Series

Flow	7.2 cfm (203.9 l/min)
Max. pressure	Up to 100 psi (6.9 bar)
Max. vacuum	Up to 91% local barometer



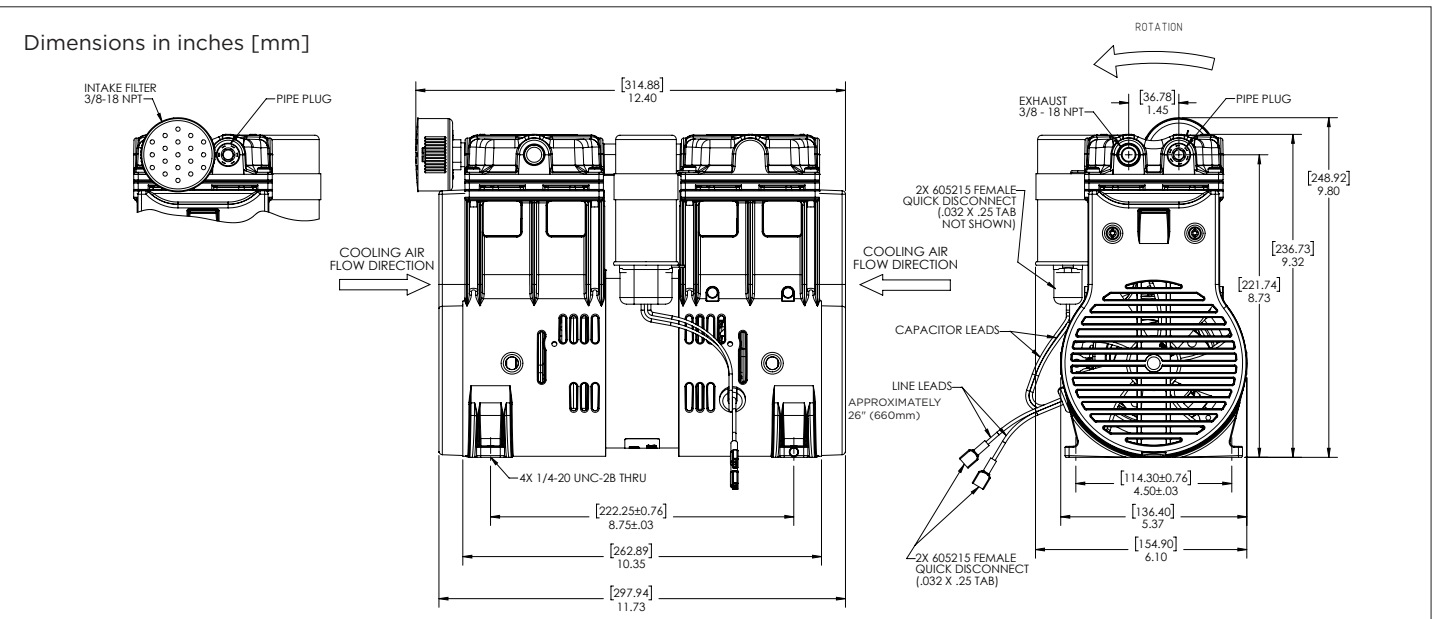
NOTE: All test values are nominal and for reference only. They are not guaranteed maximum or minimum limits, nor do they imply mean or median.

PERFORMANCE DATA		T17-0296	T19-0344
Model Number	2775CGHI50	2775CGUU70	
Head Configuration	Pressure/vacuum parallel flow	Pressure/vacuum parallel flow	
Stroke	0.50 in. (12.7 mm)	0.70 in. (12.7 mm)	
Nominal voltage input	230/50/1	230/60/1	230/50/1
Max. open air flow	4.6 cfm (130.2 l/min)	5.5 cfm (155.7 l/min)	6.1 cfm (l/min)
Max. rated pressure	100 psi (6.9 bar)	100 psi (6.9 bar)	45 psi (bar)
Current at rated pressure	3.4A	3.0A	3.6A
Power at rated pressure	610W	650W	790W
Speed at rated pressure	1415 rpm	1675 rpm	1382 rpm
Max. pressure restart	N/A	N/A	
Max. vacuum	90% local barometer	91% local barometer	
Max. vacuum restart	N/A	N/A	

ELECTRICAL DATA		P.S.C. [7 µF]	P.S.C. [15 µF]
Motor type (Capacitance)			
Motor locked rotor current	12.4A	11.5A	12.4A
Motor insulation class	B		B
Thermal switch (Open temperature)	Yes [284°F (140°C)]		Yes [284°F (140°C)]
Lead wire color, gauge	Brown(hot), blue(neutral), 18 AWG		Brown(hot), blue(neutral), 18 AWG
Capacitor lead wire color, gauge	Red, red 18 AWG		Red, red 18 AWG

GENERAL DATA		50° to 104°F (10°C TO 40°C)	50° to 104°F (10°C TO 40°C)
Operating ambient temperature			
Safety Certification	CE/TUV		CE
Net weight	23.8 lbs (10.8 kg)		23.8 lbs (10.8 kg)

PRODUCT DIMENSIONS



PUMP AND COMPRESSOR SOLUTIONS FOR OEMS WORLDWIDE

gd-thomas.com



Gardner Denver Thomas GmbH

Livry-Gargan-Str. 10
82256 Fürstenfeldbruck
Germany

T +49 8141 2280 0
F +49 8141 8892136

thomas.de@gardnerdenver.com

Gardner Denver Thomas Pneumatic Systems (Wuxi) Co. Ltd.

1 New Dong'an Road, Shuofang Town
Xinwu District, Wuxi
Jiangsu, 214142 China

T +86 510 6878 2258
F +86 510 6878 2200

thomas.cn@gardnerdenver.com

THOMAS

by Gardner Denver

Gardner Denver Thomas, Inc.

1419 Illinois Avenue
Sheboygan, WI 53081
USA

T +1 920 4574891
F +1 920 4514276

td.usa@gardnerdenver.com

The information presented in this material is based on technical data and test results of nominal units. It is believed to be accurate and reliable and is offered as an aid to help in the selection of Thomas products. It is the responsibility of the user to determine the suitability of the product for the intended use and the user assumes all risk and liability in connection there with. Thomas does not warrant, guarantee or assume any obligation or liability in connection with this information.

Models presented in this catalog are representative of the product family. Photos of products pictured in this catalog do not necessarily represent a specific model number. To obtain further information for custom options, contact your local Thomas office.

Printed in U.S.A Form No. 850-4027 06/2021 © Gardner Denver Thomas, Inc. All rights reserved.